



86 Wheatfield Road, Stony Mountain, Manitoba

Newer Warehouse Available in Stony Mountain

For Lease





Property Details

+/- 5,982 sq. ft.

UNIT 1 SIZE

+/- 9,174 sq. ft.

UNITS 2 & 3 SIZE

+/- 15,156 sq. ft.

TOTAL SIZE

\$9.95/sq. ft.

NET LEASE RATE

\$5.75/sq. ft.

CAM & TAX (EST. 2024)

16' to 20'

CEILING HEIGHT

Features

- Unit 1 offers open warehouse with 2 grade loading doors and turnkey main floor & mezzanine level show-room/office space
- Units 2 & 3 offer open warehouse with 4 grade loading doors and turnkey office space
- Units can be combined for a total of +/- 15,156 sq. ft.
- Strategically positioned within Stony Mountain with exposure to a variety of industrial businesses
- Close to CentrePort Canada and the Winnipeg International Airport with access to many trucking routes
- Ample on-site parking available



Highlights



High Quality

INDUSTRIAL BUILDING IN
STONY MOUNTAIN



Great Access

TO MAJOR TRANSPORTATION
ROUTES



Ideally

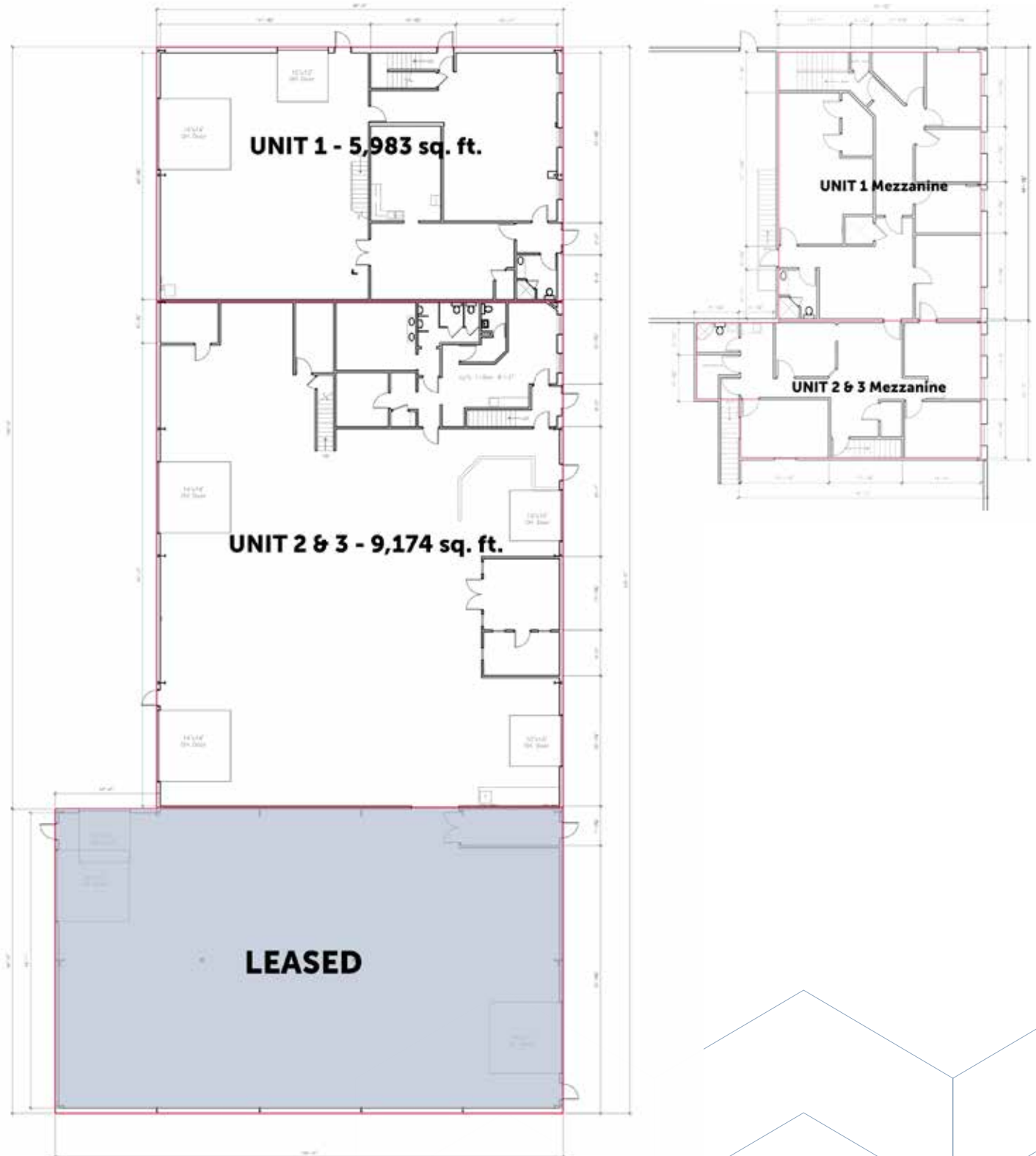
SUITED FOR INDUSTRIAL
WAREHOUSE

For Lease



86 Wheatfield Road, Stony Mountain, Manitoba
iciproperties.com

Floor Plan



For Lease 

86 Wheatfield Road, Stony Mountain, Manitoba
iciproPERTIES.com



Connect with us today!

[iciproperties.com](https://www.iciproperties.com)

Tyson Preisentanz*

SENIOR VICE PRESIDENT

tpresentanz@iciproperties.com

204-782-6183

Jared Kushner*

VICE PRESIDENT

jkushner@iciproperties.com

204-294-1087

DISCLAIMER Although information has been obtained from sources deemed reliable, neither Owner nor ICI Properties makes any guarantees, warranties or representations, expressed or implied, as to the completeness or accuracy as to the information contained herein. Any projections, opinions, assumptions or estimates used are for example only. There may be differences between projected and actual results, and those differences may be material. Purchasers must perform their own due diligence. The Property may be withdrawn without notice. Neither Owner nor ICI Properties accepts any liability for any loss or damage suffered by any party resulting from reliance on this information. If the recipient of this information has signed a confidentiality agreement regarding this matter, this information is subject to the terms of that agreement. ©2024. ICI Properties. All rights reserved.

**Services provided by 2023 Tyson Preisentanz Personal Real Estate Corporation*

**Services provided by Jared Kushner Personal Real Estate Corporation*

For Lease



86 Wheatfield Road, Stony Mountain, Manitoba

[iciproperties.com](https://www.iciproperties.com)